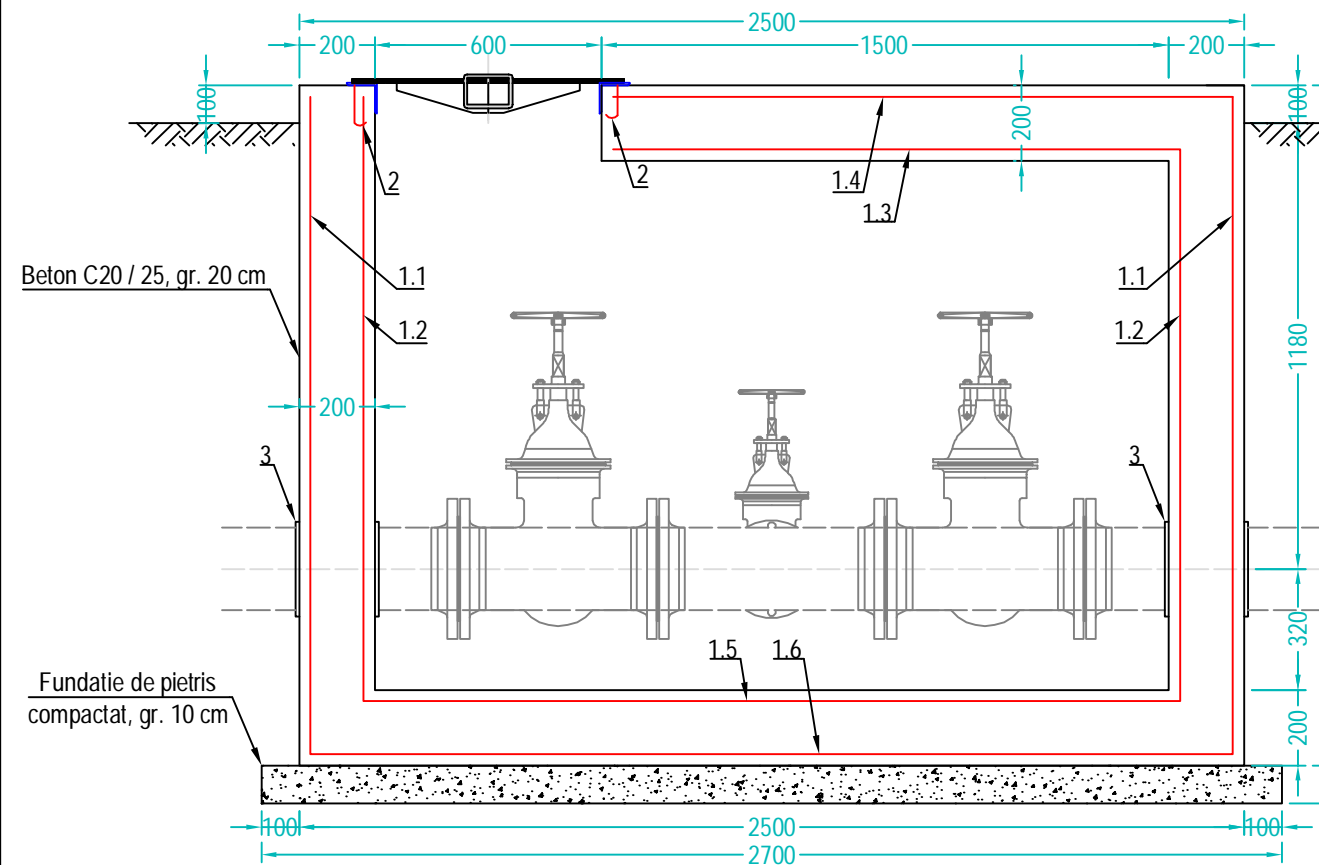
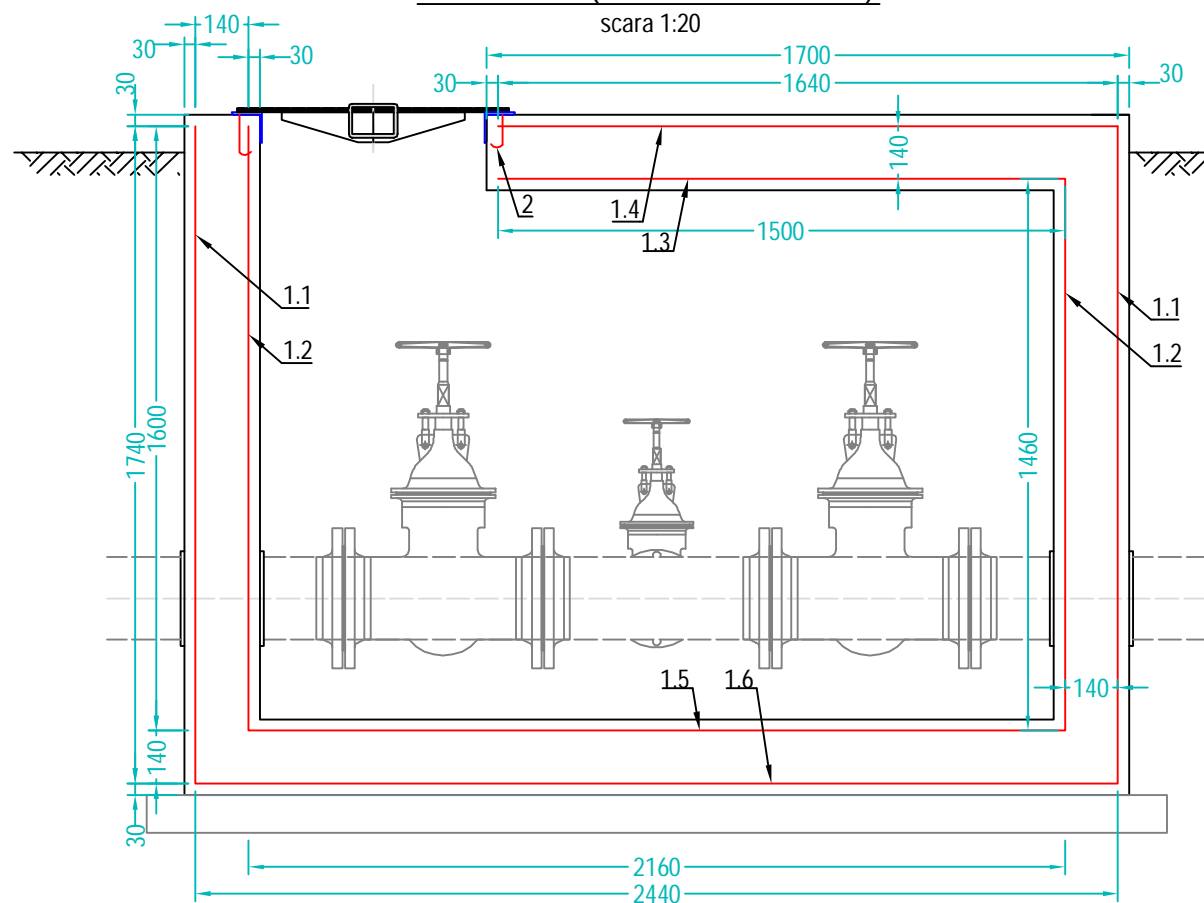


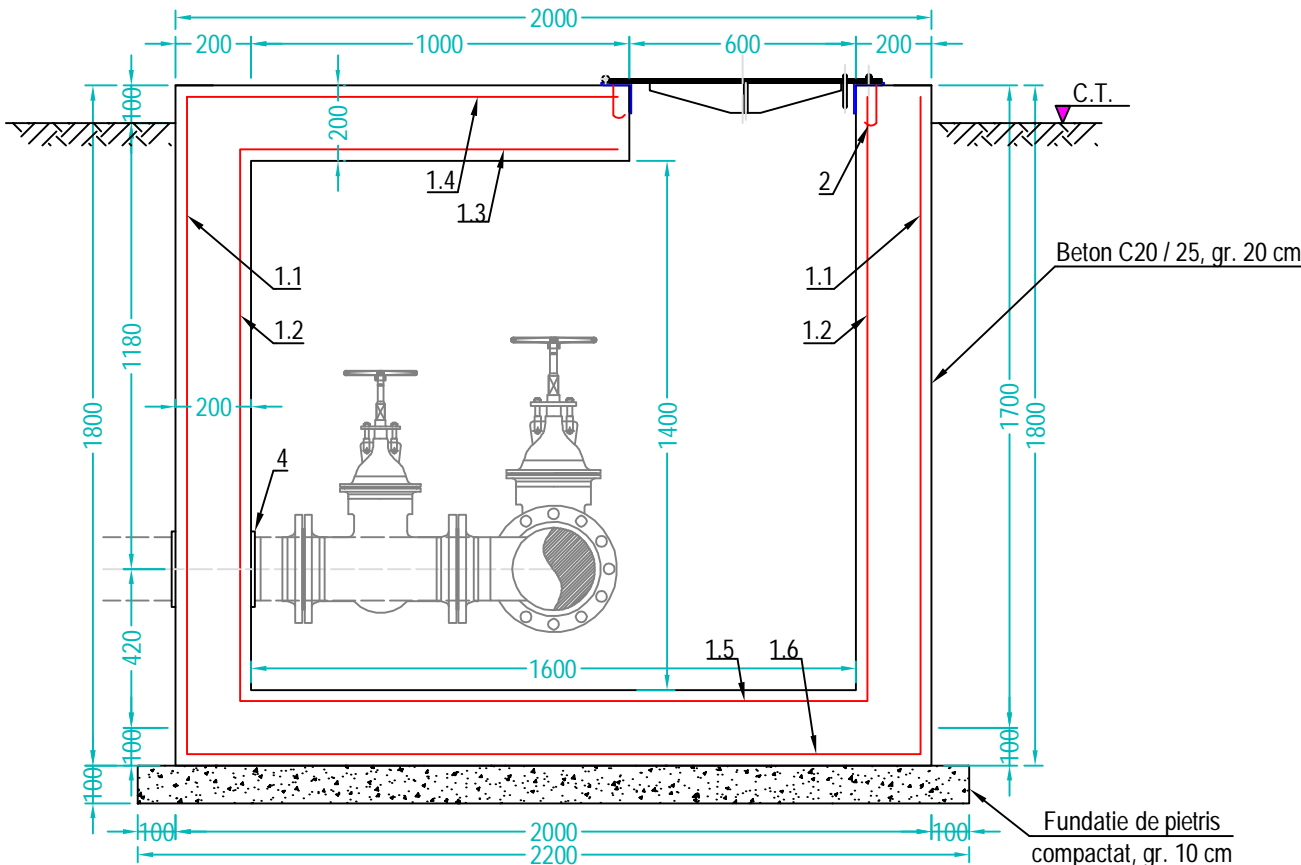
Secțiune A - A (Dimensionare camin)  
scara 1:20



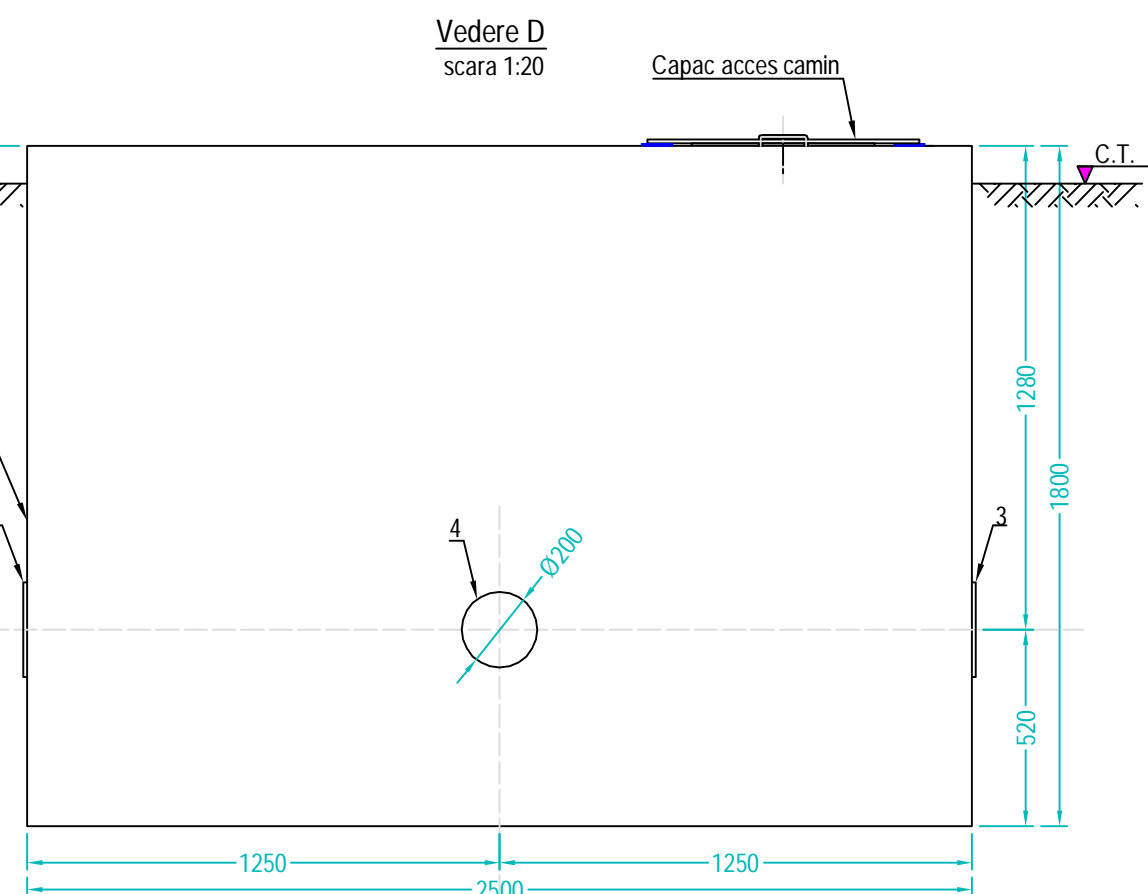
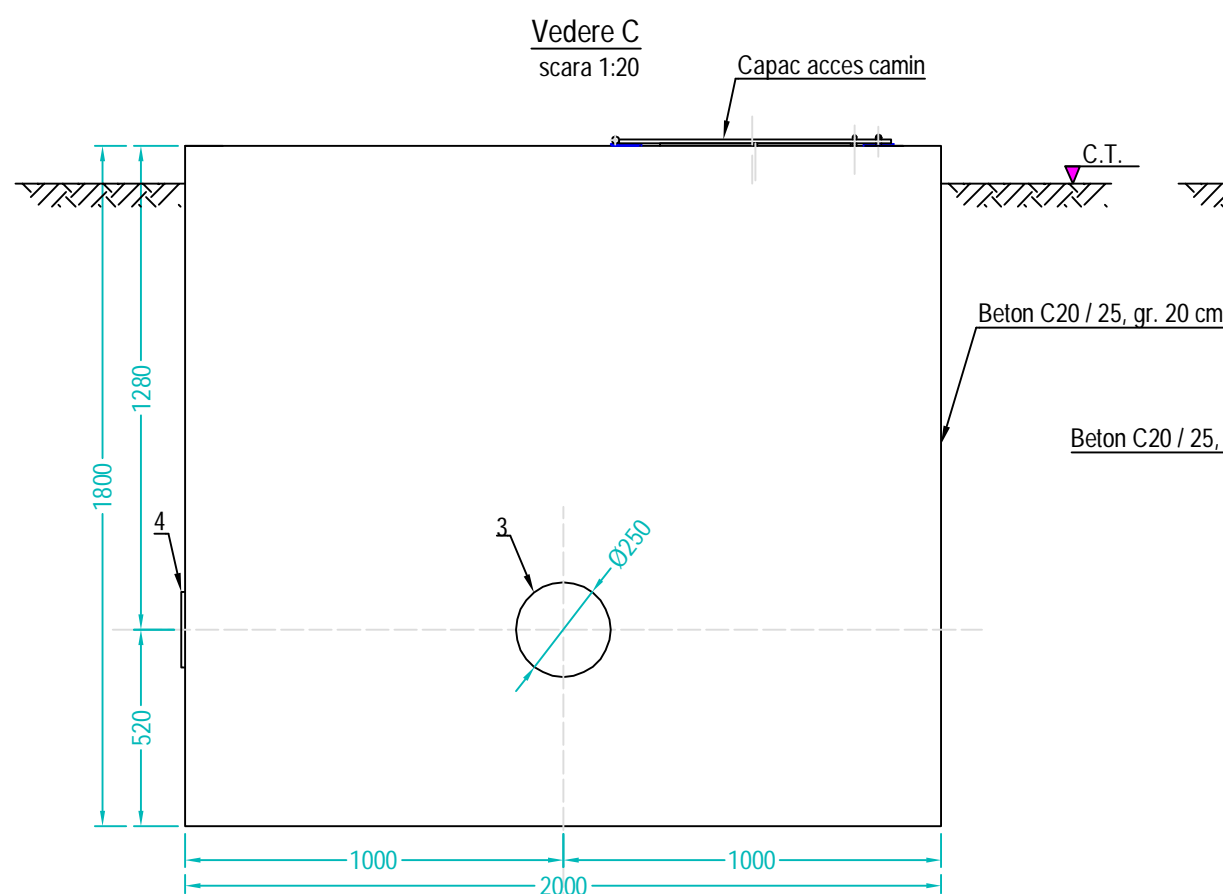
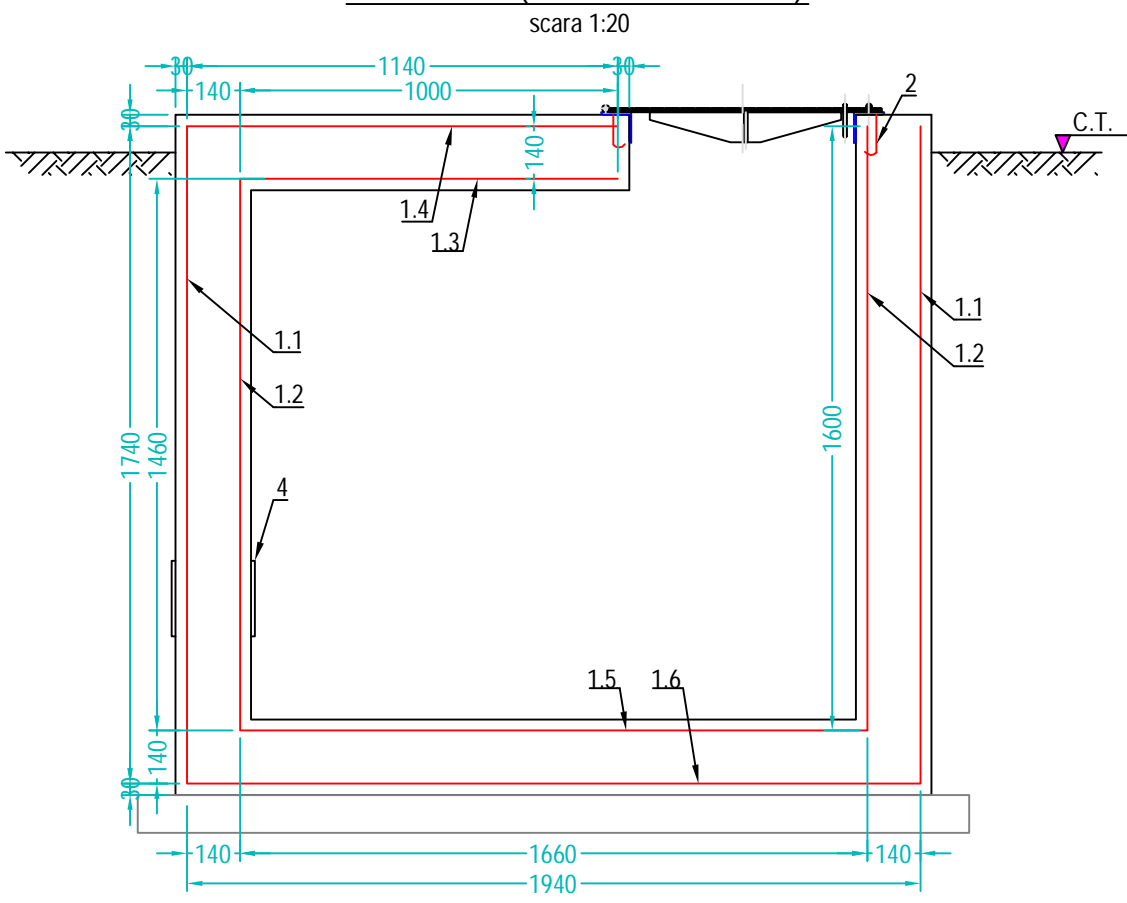
Secțiune A - A (Dimensionare armatura)  
scara 1:20



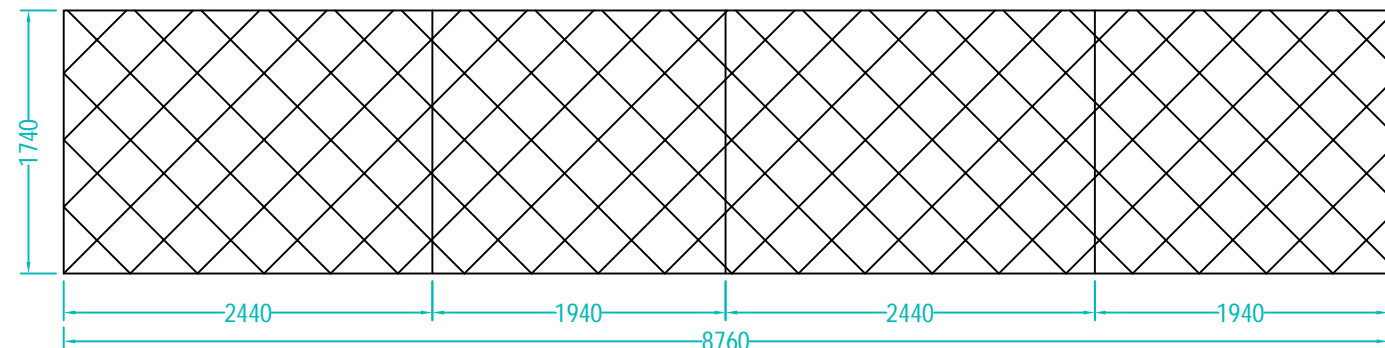
Secțiune B - B (Dimensionare camin)  
scara 1:20



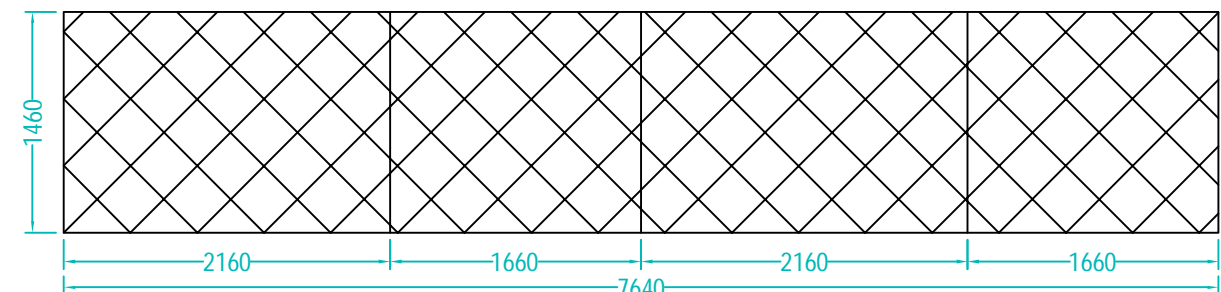
Secțiune B - B (Dimensionare armatura)  
scara 1:20



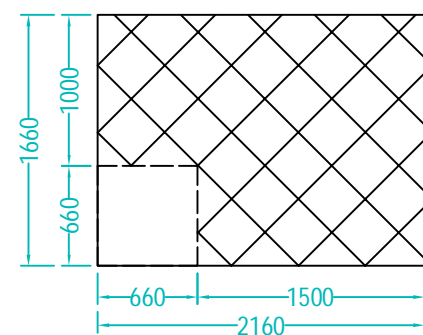
Detaliu 1.1  
Desfasurare plasa sudata tip Buzau Ø12 mm, cu ochiuri 100 x 100 mm  
S= 15.3 mp - 1 buc.  
scara 1:50



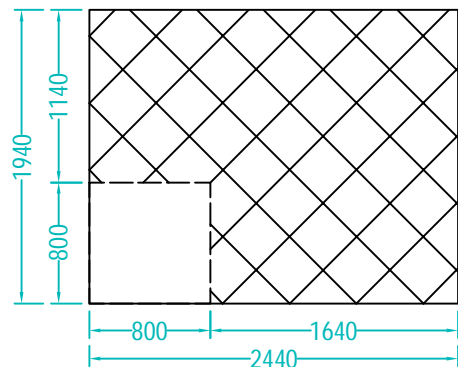
Detaliu 1.2  
Desfasurare plasa sudata tip Buzau Ø12 mm, cu ochiuri 100 x 100 mm  
S= 11.2 mp - 1 buc.  
scara 1:50



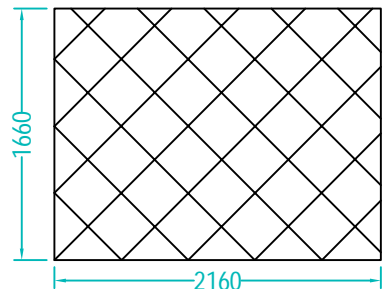
Detaliu 1.3  
Plasa sudata tip Buzau Ø12 mm, cu ochiuri 100 x 100 mm  
S= 3.60 mp - 1 buc.  
scara 1:50



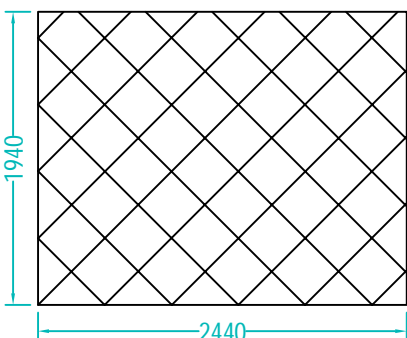
Detaliu 1.4  
Plasa sudata tip Buzau Ø12 mm, cu ochiuri 100 x 100 mm  
S= 4.7 mp - 1 buc.  
scara 1:50



Detaliu 1.5  
Plasa sudata tip Buzau Ø12 mm, cu ochiuri 100 x 100 mm  
S= 3.60 mp - 1 buc.  
scara 1:50



Detaliu 1.6  
Plasa sudata tip Buzau Ø12 mm, cu ochiuri 100 x 100 mm  
S= 4.7 mp - 1 buc.  
scara 1:50



NOTA:  
Beton - C20/25, V= 4.25 mc.  
Armatura: Plasa sudata STNB 6 x 100 x 100 - Indicativ 117GQ 283

Poz.	Denumire	Dimensiuni	STAS	Material	Nr. buc.	Masa/buc [Kg]	Masa [Kg]
1.1 / 1.2 / 1.3 / 1.4 / 1.5 / 1.6	Plasa sudata tip Buzau	Ø12 mm, ochiuri 100 x 100 mm	Indicativ 117GQ 283		43.1 mp	17.7 Kg/mp	763.0
2	Mustati de ancoraj	l= 130 mm, Ø10 mm		OB 37	8	0.05	0.40
3	Teava PVC	DN 250, L= 220 mm		PVC	2	1.76	3.52
4	Teava PVC	DN 200, L= 220 mm		PVC	1	1.05	1.05
	TOTAL						768.0

Verificator / Expert	Nume	Semnatura	Cerinta	Referat / Expertiza Nr. / Data
S.C. SNIF PROIECT S.A. Targoviste Numar de inmatriculare J15/925/2005				Beneficiar: CONPET S.A. PLOIESTI
Specificatie	Nume	Semnatura	Scara: 1:20 1:50	Pr. nr. 368/2018
Sel proiect	Ing. Vlasceanu Catalin			Faza PT+CS+DE
Desenat	Ing. Radu Florin		Data: 2019	Pl. nr. 11
Proiectat	Inq. Costea Paul			